



VILLAGE ESTATES



• EST.1993 •

93 Main Road, Sidcup, Kent DA14 6ND

Tel: 0208 302 1002

www.village-estates.com

Email: sidcup@village-estates.com



NO FORWARD CHAIN

LARGE LIVING ROOM

SHARE OF FREEHOLD

TWO DOUBLE BEDROOMS

OVERLOOKS LANDSCAPED GARDEN

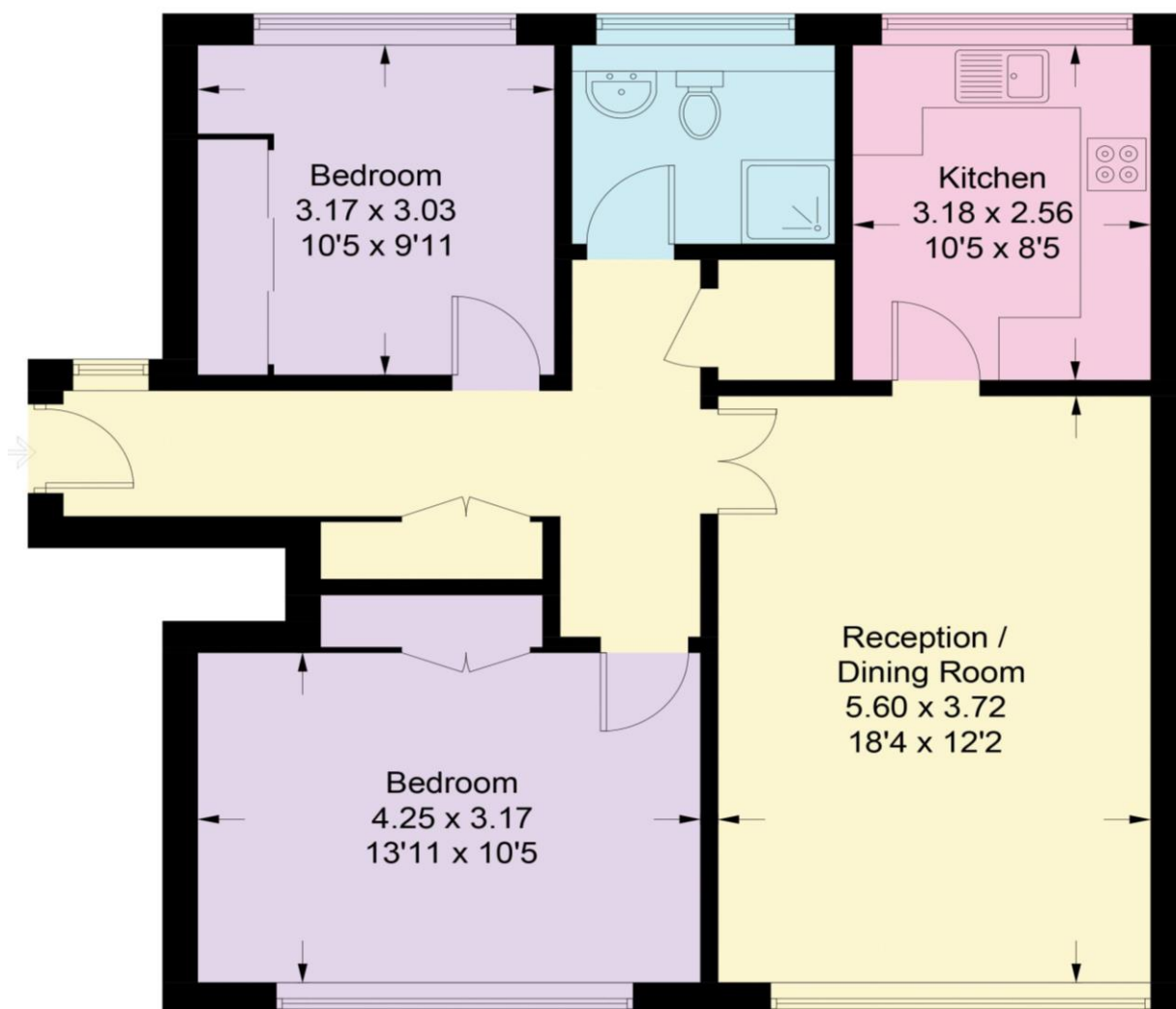
GROUND FLOOR MAISONNETTE



**13 Embassy Court
Lansdown Road
Sidcup, DA14 4EW**

Guide Price £300,000-£325,000

Two bedroom ground floor maisonette forming part of a very well maintained development located within a short walk to Sidcup high street and mainline station. The property is being sold with no forward chain and benefits from a slightly wider than usual garage, a share of the freehold and reasonable service



CONSUMER PROTECTION FROM UNFAIR TRADING REGULATIONS 2008

Please note that any services, heating system or appliances have not been tested, and no warranty can be given or implied as to their working order. You are advised to obtain verification from your solicitor or surveyor. References to the tenure of a property are based on information supplied by the seller. We have not had sight of the title documents and a buyer is advised to obtain verification from their solicitor. Items shown in photographs are not included unless specifically mentioned within the sales particulars, but may be available by separate negotiation. Whilst every attempt has been made to ensure the accuracy of the floor plan contained here, measurements of doors, windows, rooms and any other items are approximate and no responsibility is taken for any error, omission, or mis-statement. We advise you to book an appointment to view before embarking on any journey to see a property, and check its availability. The accuracy of these details are not guaranteed and they do not form part of the contract.